

Village Farm West Lilling - Street Scenes Proposed & Existing

© COPYRIGHT
 1. THIS DRAWING IS THE PROPERTY OF ROBERT BURNS DESIGN ASSOCIATES
 2. IT IS TO BE USED ONLY FOR THE PROJECT AND SITE SPECIFICALLY IDENTIFIED
 3. ANY REUSE OR MODIFICATION OF THIS DRAWING WITHOUT THE WRITTEN PERMISSION OF ROBERT BURNS DESIGN ASSOCIATES IS STRICTLY PROHIBITED
 4. THIS DRAWING IS NOT TO BE USED FOR ANY OTHER PROJECT OR SITE WITHOUT THE WRITTEN PERMISSION OF ROBERT BURNS DESIGN ASSOCIATES



PROPOSED STREET SCENE

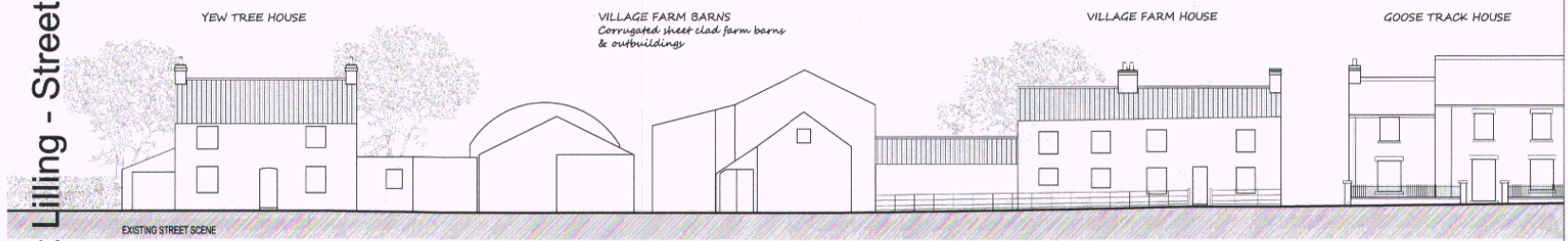
Existing field hedge
Gated & fenced pedestrian side access path to Yew Tree House

Access gate (timber 5' bar) to Barn Terraces & Yew Tree House rear garages & off street parking areas

Access gates (timber 5' bar) to farmhouse existing barn & off street parking area

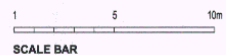
New entrance porch and enlarged doorway

RYEDALEDOM
 14005982m
 -3 JUN 2014
 DEVELOPMENT
 MANAGEMENT



EXISTING STREET SCENE

THIS COPY HAS BEEN MADE BY OR WITH THE AUTHORITY OF RYEDALEDOM DISTRICT COUNCIL PURSUANT TO SECTION 47 OF THE COPYRIGHT, DESIGNS AND PATENTS ACT 1988. UNLESS THAT ACT PROVIDES A RELEVANT EXCEPTION TO COPYRIGHT THE COPY MUST NOT BE REPRODUCED WITHOUT THE PRIOR PERMISSION OF THE COPYRIGHT OWNER.



PROPOSED & EXISTING STREET SCENES

Robert Burns Design Associates logo and contact information.

REGISTERED OFFICE:
 THE BURN HOUSE,
 VILLAGE FARM,
 WEST LILLING,
 WILTSHIRE,
 SNOWDON, WILTSHIRE,
 SNOWDON, WILTSHIRE,
 SNOWDON, WILTSHIRE

PROJECT: VILLAGE FARM WEST LILLING

TITLE: PROPOSED & EXISTING STREET SCENES PLANNING

NO.	DATE	BY	CHKD BY
1	08/09/13	RB	RB
2	11/09/13	RB	RB
3	11/09/13	RB	RB
4	11/09/13	RB	RB
5	11/09/13	RB	RB
6	11/09/13	RB	RB
7	11/09/13	RB	RB
8	11/09/13	RB	RB
9	11/09/13	RB	RB
10	11/09/13	RB	RB
11	11/09/13	RB	RB
12	11/09/13	RB	RB
13	11/09/13	RB	RB
14	11/09/13	RB	RB
15	11/09/13	RB	RB
16	11/09/13	RB	RB
17	11/09/13	RB	RB
18	11/09/13	RB	RB
19	11/09/13	RB	RB
20	11/09/13	RB	RB
21	11/09/13	RB	RB
22	11/09/13	RB	RB
23	11/09/13	RB	RB
24	11/09/13	RB	RB
25	11/09/13	RB	RB
26	11/09/13	RB	RB
27	11/09/13	RB	RB
28	11/09/13	RB	RB
29	11/09/13	RB	RB
30	11/09/13	RB	RB
31	11/09/13	RB	RB
32	11/09/13	RB	RB
33	11/09/13	RB	RB
34	11/09/13	RB	RB
35	11/09/13	RB	RB
36	11/09/13	RB	RB
37	11/09/13	RB	RB
38	11/09/13	RB	RB
39	11/09/13	RB	RB
40	11/09/13	RB	RB
41	11/09/13	RB	RB
42	11/09/13	RB	RB
43	11/09/13	RB	RB
44	11/09/13	RB	RB
45	11/09/13	RB	RB
46	11/09/13	RB	RB
47	11/09/13	RB	RB
48	11/09/13	RB	RB
49	11/09/13	RB	RB
50	11/09/13	RB	RB
51	11/09/13	RB	RB
52	11/09/13	RB	RB
53	11/09/13	RB	RB
54	11/09/13	RB	RB
55	11/09/13	RB	RB
56	11/09/13	RB	RB
57	11/09/13	RB	RB
58	11/09/13	RB	RB
59	11/09/13	RB	RB
60	11/09/13	RB	RB
61	11/09/13	RB	RB
62	11/09/13	RB	RB
63	11/09/13	RB	RB
64	11/09/13	RB	RB
65	11/09/13	RB	RB
66	11/09/13	RB	RB
67	11/09/13	RB	RB
68	11/09/13	RB	RB
69	11/09/13	RB	RB
70	11/09/13	RB	RB
71	11/09/13	RB	RB
72	11/09/13	RB	RB
73	11/09/13	RB	RB
74	11/09/13	RB	RB
75	11/09/13	RB	RB
76	11/09/13	RB	RB
77	11/09/13	RB	RB
78	11/09/13	RB	RB
79	11/09/13	RB	RB
80	11/09/13	RB	RB
81	11/09/13	RB	RB
82	11/09/13	RB	RB
83	11/09/13	RB	RB
84	11/09/13	RB	RB
85	11/09/13	RB	RB
86	11/09/13	RB	RB
87	11/09/13	RB	RB
88	11/09/13	RB	RB
89	11/09/13	RB	RB
90	11/09/13	RB	RB
91	11/09/13	RB	RB
92	11/09/13	RB	RB
93	11/09/13	RB	RB
94	11/09/13	RB	RB
95	11/09/13	RB	RB
96	11/09/13	RB	RB
97	11/09/13	RB	RB
98	11/09/13	RB	RB
99	11/09/13	RB	RB
100	11/09/13	RB	RB

